

# Identifying your car

Morris Minors can be broadly classified into the following series:

**Series MM** - September 1948 > February 1953

Chassis numbers: 501 > 179839

**Series II** - August 1952 > September 1956

Chassis numbers: 160001 > 448714

**Early 1000 (Series III)** - October 1956 > September 1962

Chassis numbers: 448801 > 990289

**Late 1000 (Series V)** - September 1962 > April 1971

Chassis numbers: 990290 > 1294082

NOTE: Series IV was allocated to the Mini-Minor

---






The types can also be split up further depending upon vehicle variant.

	Series MM Lowlight	Series MM Highlight	Early Series II	Late Series II	Early 1000 Series 3	Late 1000 Series 5
Engine cc & Type	918cc SV	918cc SV	803cc OHV	803cc OHV	948cc OHV	1098cc OHV
Production Dates	09/48 > 09/50	09/50 > 02/53	08/52 > 10/54	10/54 > 09/56	10/56 > 09/62	09/62 > 04/71
2 Door Saloon	X	X	X	X	X	X
4 Door Saloon		X	X	X	X	X
Convertible	X	X	X	X	X	X
Traveller			X	X	X	X
Van			X	X	X	X
Pickup			X	X	X	X

Note: SV = Side Valve, OHV = Over Head Valve

As can be seen from above, there was never a Series MM Traveller, Van or Pickup. Also there was never a Series MM lowlight 4-door.






## Front Grilles





September '48 > September '50		Lowlight front end 'Cheese-grater' grille
September '50 > October '54		Highlight version new larger headlamps mounted on wings, sidelights mounted on grille
October '54 > August '61		Sidelights moved onto wings 'slatted' grille introduced
August '61 > October '63		Sidelight units changed to larger type
October '63 > April '71		Combined indicator/sidelight units fitted

## Lighting

Various lighting arrangements were used on the Minor and are listed below:

### Rear Lights:




September '48 > March '49	 	'Central screw' single lamp with reflector on opposite side of car (L482) 
March '49 > June '49		Flush circular lights incorporating stop lamps (L488)
June '49 > December '54		Triangular 'helmet' type (L471)

<p>December '54 &gt;</p> <p>October '56</p>		 <p>L549 lens. Larger unit with reflector (chrome ring but painted base).</p>
<p>October '56 &gt;</p> <p>October '63</p>		<p>L549 lens.</p> <p>Fully chromed base.</p>
<p>October '63 &gt;</p> <p>April '71</p>		<p>Larger units incorporating Indicators.</p>

## Side Lights:

September '50 > August '61		 L489
August '61 > October '63		 L488
October '63 > April '71		 L632

## Head Lamps:

September '48 > September '50		Small 5" 'low-light' headlamp units with integral 'pilot lamp'
September '50 > December '52		Larger 7" wing-mounted headlamp units Split-type securing ring (screw at bottom)
December '52 > April '71		One piece securing ring. Sealed beam units fitted from September 1966

## Speedometer Identification

Please note: This chart is unfinished. Additional information very welcome!

<u>Serial No.</u>	<u>TPM</u>	<u>Colour</u>	<u>Max Speed</u>	<u>Axle Ratio</u>	<u>Series</u>	<u>Model</u>	<u>From Chassis Number</u>	<u>To Chassis Number</u>
X69982	1600	White	80 MPH		MO	Trip Meter		
X69982/5	1600	White	80 MPH		MO	Trip Meter		
X70620/2	1600	White	80 MPH	4.55	MM	All Series MMs		
X70620/7	1000	White	80 MPH	5.375	2	Early Series 2		
511440109	1000	Bronze	80 MPH	5.375	2	Late Series 2		
SN4401/9		Bronze	80 MPH		3	Saloon	444801	579227
						Convertible		579227
						Traveller		572906
SN4401/15	1500	Bronze	80 MPH	4.55	3	Saloon	444801	579227
						Convertible		
SN4406/00	1525	Bronze	80 MPH	4.55	3			
SN4406/08		Bronze	80 MPH	5.375	3	Saloon	579228	990289
						Convertible		
SN4407/00	1504	Bronze	80 MPH	4.55	3	Traveller	572907	953663
SN4410/00	1408	Silver	90 MPH	4.22	5			
SN4418/04	1376	Black	90 MPH					
SN4419/04		Black	90 MPH	4.22	5		1203563	
SN4419/05		Black	KPH	4.22	5	2-Door	1082280	1203563
						4-Door	1082284	
						Convertible	1082717	
						Traveller	1082537	
SN4421/00SA	1248	Black	90 MPH	3.73		Mini		
SN4421/12	1408	Black	90 MPH	4.22	5			
SN4423/00	1504	Black	90 MPH	4.55	5	LCV		
SN4423/04	1408	Black	90 MPH	4.22	5	Traveller		
SN4423/06		Black	90 MPH	4.22	5	Saloon	1206703	End
						Convertible		
						Traveller		
SN4423/07		Black	KPH	4.22	5	Saloon	1206703	End
						Convertible		
						Traveller		
SN4423/12		Black	90 MPH	4.22	5	Saloon	Available throughout with special option 145-14 tyres	
						Convertible		
						Traveller		
SN4451/15		Bronze	80 MPH	4.55	3	Traveller	444801	572907
SN4466/00		Bronze	80 MPH	4.55	3	Saloon	579228	953663
						Convertible		
SN4467/00	1504	Bronze	80 MPH	4.55	3			
SN4470/30	1376	Bronze	90 MPH					
SN4477/00	1504	Bronze	80 MPH	4.55	3	Saloon	953664	990289
						Convertible		
						Disabled	957001	Onwards
SN4477/10		Bronze	80 MPH	5.375	3	Saloon	579228	990289

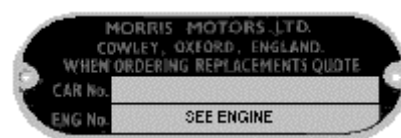
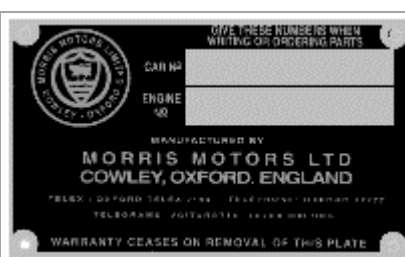
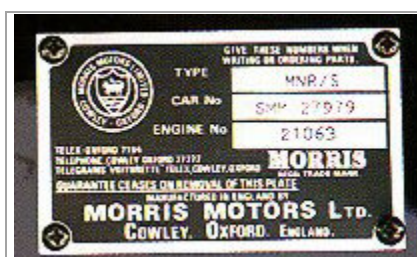
						Convertible		
SN4477/31		Bronze	KPH	4.22	5	2-Door	990290	1082279
						4-Door		1082283
						Convertible		1082716
						Traveller		1082536
SN4477/80		Bronze	90 MPH	4.22	5	2-Door	990290	1082279
						4-Door		1082283
						Convertible		1082716
						Traveller		1082536
SN6401/56	1248	Black	90 MPH					

## Fascia Layout

<u>Steering Wheel</u>	<u>Indicator/Trafficator</u>	<u>From</u>	<u>Chassis Number</u>	<u>To</u>	<u>Chassis Number</u>
Flat type with brown boss	Traficator switch on dash	Sep 1948	501	1950?	
Flat type with gold boss		1950?		Oct 1956	448801
Dished 3-spoke with small centre	Traficator/horn control on steering column. Indicator lamp on speedo	Oct 1956	448801	Oct 1957	549923 - 555415
	Indicator lamp moved from speedo to steering column mounted trafficator control	Oct 1957	549923 - 555415	Mar 1959	705622
Dished 3 spoke with large centre	Horn moved to centre of steering wheel.	Mar 1959	705622	Oct 1964	2-door - 1082280
	3 lamp speedo introduced.				4-door - 1082284
	Self-cancelling indicator with green lamp on end.				Traveller - 1082537
	Main beam warning lamp changed from red to blue.				Convertible - 1082717
2 spoke safety type	Black faced speedo introduced with oil filter warning lamp	Oct 1964	2-door - 1082280	Apr 1971	1294082
			4-door - 1082284		
			Traveller - 1082537		
			Convertible - 1082717		

## Chassis Number Identification

There were three types of chassis plate and chassis numbering systems used during the Minor's production. Here is an identification chart:



Sep 1948 > Apr 1952

Apr 1952 > Mid 1958

Mid 1958 > Apr 1971

Prefix: **SMM**. (Series Morris Minor)

**MNR** (Minor) /

S = Synobel paint

SYN = Synthetic paint

No designation = Cellulose paint

First Letter	F	Morris Minor
	O	LCV
Second Letter	A	4 Door Saloon
	B	2 Door Saloon
	C	Convertible
	L	Traveller
	E	Van
	F	Pickup
	G	Chassis/Cab
	H	GPO Mail Van
	J	GPO Engineer's Van
Third Letter	A	Black
	B	Light Grey
	C	Dark Red
	D	Dark Blue
	E	Mid Green
	F	Beige
	G	Brown
	H	CKD Finish
	J	Dark Grey
	K	Light Red
	L	Light Blue
	P	Ivory
	R	White
	S	Mid Grey
	T	Light Green
	U	Dark Green
First Number	1	RHD Home market
	2	RHD Export
	3	LHD Export
	4	North American Export
	5	RHD CKD
	6	LHD CKD
Second Number	1	Synthetic
	2	Synobel
	3	Cellulose
	4	Metallic
	5	Primer

First Letter	M	Morris
	A	Austin
Second Letter	A	A-series engine
Third Letter	S	4 Door Saloon
	2S	2 Door Saloon
	T	Tourer/Convertible
	W	Traveller
	V	Van
	U	Pickup
	Q	Chassis/Cab
	G	GPO Postal Van
	E	GPO Engineer's Van
Forth Figure	3	948cc
	5	1098cc
	C	Austin LCV
Optional Letter	D	Deluxe
Post 1968 Suffix (Factory)	M	Cowley
	F	Adderley Park

## Engine Information

There were four types of engine fitted to the Morris Minor. Each one corresponds to the series of car.

Series	Engine	Capacity	Compression	BHP	Torque	Bore	Stroke	0-50 MPH	Top speed
Series MM	Sidevalve	918cc	6.6:1	27.5 @ 4400 RPM	39 lb/ft @ 2400 RPM	57mm	90mm	37.1 Sec	62 MPH
Series II	A-series	803cc	7.2:1	30 @ 4800 RPM	40 lb/ft @ 2400 RPM	58mm	76mm	29.2 Sec	62 MPH
Series 3	A-series	948cc	8.3:1	37 @ 4750 RPM	50 lb/ft @ 2500 RPM	62.9mm	76.2mm	18.5 Sec	75 MPH
Series 5	A-series	1098cc	8.5:1	48 @ 5100 RPM	60 lb/ft @ 2500 RPM	64.6mm	83.7mm	15.8 Sec	78 MPH

Note:- Two designs of side valve engine were fitted to the Series MM:

Type USHM 2. Up to engine no. 77000  
No oil filter on early engines. No thermostat  
No water pump – thermo syphon cooling  
Dynamo attached to cylinder head

Type USHM 3. Engine no 77001 on  
Oil Filter. Thermostat in alloy housing  
Blanking plate for optional water pump and heater  
Alloy water jacket with dynamo attached  
Engine drain tap when water pump fitted  
Re designed cylinder head  
Thermo syphon or water pump cooling

## Gearbox / Rear Axle Information

ALL gearboxes fitted to the Morris Minor had synchromesh on 2nd, 3rd and top gears but not on bottom or reverse.

Series	Engine	Gearbox Type	Bottom	2nd	3rd	Top	Reverse	Diff ratio	Clutch
Series MM	Sidevalve 918cc	Cast Iron	3.95	2.31	1.54	1	3.95	4.55 (9/41) or optional 5.286 (7/37) or 5.375 (8/43)	6 1/4" Spring
Series II	A-series 803cc	Aluminium alloy. Smooth casing with no remote housing	4.09	2.588	1.679	1	5.174	5.286 (7/37)	6 1/4" Spring
Series 3	A-series 948cc	Aluminium alloy. Smooth casing with remote housing	3.628	2.374	1.412	1	4.664	4.55 (9/41)	6 1/4" Spring
Series 5	A-series 1098cc	Aluminium alloy. Ribbed casing with remote housing	3.628	2.172	1.412	1	4.664	4.22 (9/38)	7 1/4" Spring
Midget	A-series 1275cc	Aluminium alloy. Ribbed casing with remote housing	3.2	1.916	1.357	1	4.114	3.9 (10/39)	6 1/2" Diaphragm

## Paint / Trim Colour Schemes:

### Series MM

<u>Paint</u>	<u>Trim (2-door / Tourer)</u>	<u>Trim (4-door)</u>	<u>Carpets</u>
<b>Sep 1948 &gt; Sep 1950</b>			
Black	Beige/Brown piping	N/A	Brown
Platinum Grey	Beige/Brown piping	N/A	Brown
Romain Green	Beige/Green piping	N/A	Green
Maroon	Beige/Maroon piping	N/A	Maroon
<b>Sep 1950 &gt; Oct 1951</b>			
Black	Beige/Brown piping	Brown	Brown
Gascoyne Grey	Beige/Brown piping	Brown	Brown
Mist Green	Beige/Green piping	Green	Green
Thames Blue	Beige/Green piping	Green	Green
<b>Oct 1951 &gt; Jun 1952</b>			
Black	Red	Red	Maroon
Gascoyne Grey	Beige	Brown	Brown
Mist Green	Beige	Green	Green
Thames Blue	Beige	Green	Green
<b>Jun 1952 &gt; Feb 1953</b>			
Black	Maroon	Maroon	Maroon
Clarendon Grey	Maroon	Maroon	Maroon
Empire Green	Green	Green	Green
Birch Grey	Maroon	Maroon	Maroon

## Series II

<u>Paint</u>	<u>Trim</u>	<u>Carpets</u> <u>(Saloon/Convertible)</u>	<u>Carpets</u> <u>(Traveller)</u>
<b>Jul 1952 &gt; Oct 1954 - Traveller production began Oct 1953</b>			
Black	Maroon	Maroon	Black*
Clarendon Grey	Maroon	Maroon	Black*
Empire Green	Green	Green	Black*
Birch Grey	Maroon	Maroon	Black*
*NOTE: Standard Travellers had black rubber floor mats. Deluxe versions had trim on the front wheel arches			
<b>Oct 1954 &gt; Oct 1955</b>			
Black	Maroon	Maroon	Black*
Clarendon Grey	Maroon	Maroon	Black*
Empire Green	Green	Green	Black*
Smoke Blue (to Feb '55)	Maroon	Maroon	Black*
Sandy Beige (from Feb '55)	Maroon	Maroon	Black*
<b>Oct 1955 &gt; Sep 1956</b>			
Black	Maroon	Maroon	Black*
Clarendon Grey	Maroon	Maroon	Black*
Empire Green	Green	Green	Black*
Sandy Beige	Maroon	Maroon	Black*
<b>May 1956 &gt; Sep 1956 - Saloon ONLY Colours</b>			
Sage Green	Green	Green	N/A
Dark Green	Grey	Green	N/A
Birch Grey	Maroon	Maroon	N/A

### **Series 3 (948cc)**

<u><b>Paint</b></u>	<u><b>Trim</b></u>	<u><b>Hood</b></u>	<u><b>Carpets</b></u>	<u><b>Headlining</b></u>	<u><b>Grille</b></u>	<u><b>Coachline</b></u>	<u><b>Wheels</b></u>
<b>Sep 1956 &gt; Feb 1959</b>							
Black*	Red*	Maroon	Maroon	Light Grey	Grey	Red	Birch Grey
	Green*	Grey	Beagle Green				
	Grey		Black				
Clarendon Grey*	Red*	Maroon	Maroon	Light Grey	Clarendon Grey	Red	Clarendon Grey
	Grey	Grey	Black				
Birch Grey*	Red*	Maroon	Maroon	Light Grey	Birch Grey	Red	Birch Grey
	Grey	Grey	Black				
Sage Green	Grey	Grey	Beagle Green	Light Grey	Sage Green	Birch Grey	Sage Green
	Green						
Turquoise	Grey	Grey	Black	Light Grey	Turquoise	Birch Grey	Birch Grey
Cream	Red	Maroon	Maroon	Light Grey	Cream	Red	Cream
Dark Green*	Grey*	Grey	Black	Light Grey	Dark Green	Birch Grey	Birch Grey
Pale Ivory	Red	Maroon	Maroon	Light Grey	Pale Ivory	Red	Pale Ivory
*NOTE: Available as a colour / trim choice for Travellers							
<b>Feb 1959 &gt; Jul 1960</b>							
Black*	Red	Pearl Grey	Red	Pearl Grey	Pearl Grey	Red	Pearl Grey
Frilford Grey*	Red	Maroon	Red	Pearl Grey	Pearl Grey	Red	Pearl Grey
Pearl Grey	Red	Maroon	Red	Pearl Grey	Pearl Grey	Red	Pearl Grey
Sage Green*	Green	Pearl Grey	Beagle Green	Pearl Grey	Pearl Grey	Pearl Grey	Pearl Grey
Smoke Grey	Blue-Grey	Pearl Grey	Blue	Pearl Grey	Pearl Grey	Blue	Pearl Grey
Clipper Blue*	Blue-Grey	Pearl Grey	Blue	Pearl Grey	Pearl Grey	Pearl Grey	Pearl Grey
<b>Jul 1960 &gt; Oct 1961</b>							
Black*	Red	Maroon	Red	Pearl Grey	Old English White	Red	Old English White
Yukon Grey*	Red	Maroon	Red	Pearl Grey	Old English White	Red	Old English White
Smoke Grey*	Blue-Grey	Pearl Grey	Blue	Pearl Grey	Old English White	Blue	Old English White
Clipper Blue	Blue-Grey	Pearl Grey	Blue	Pearl Grey	Old English White	Old English White	Old English White
Porcelain Green	Oxford Beige	Pearl Grey	Fir Green	Pearl Grey	Old English White	Leaf Green	Old English White
Old English White*	Red	Maroon	Red	Pearl Grey	Old English White	Red	Old English White
<b>Oct 1961 &gt; Oct 1962</b>							
Black*	Tartan Red	Pearl	Tartan Red	Light	Old English	Red	Old English

		Grey		Beige	White		White
Dove Grey	Tartan Red	Pearl Grey	Tartan Red	Light Beige	Old English White	Red	Old English White
Smoke Grey*	Blue-Grey	Pearl Grey	Blue	Light Beige	Old English White	Blue	Old English White
Almond Green*	Porcelain Green	Pearl Grey	Almond Green	Light Beige	Old English White	Porcelain Green	Old English White
Old English White*	Blue-Grey	Pearl Grey	Tartan Red	Light Beige	Old English White	Red	Old English White
	Tartan Red						
Rose Taupe*	Tartan Red	Pearl Grey	Tartan Red	Light Beige	Old English White	Red	Old English White
		Maroon					
Highway Yellow	Blue-Grey	Pearl Grey	Blue	Light Beige	Old English White	Blue	Old English White
Trafalgar Blue	Blue-Grey	Pearl Grey	Blue	Light Beige	Old English White	Pearl Grey	Old English White

NOTE: From October 1961 Duo-tone trim was fitted to Deluxe cars. Silver Beige panels contrasted with Tartan Red, Porcelain Green and Blue-Grey trim. Standard Travellers had black rubber floor mats. Deluxe versions had trim on the front wheel arches.

## **Series 5 (1098cc)**

<u><b>Paint</b></u>	<u><b>Trim</b></u>	<u><b>Carpets</b></u>	<u><b>Hood</b></u>	<u><b>Grille</b></u>	<u><b>Coachline</b></u>	<u><b>Wheels</b></u>
<b>Oct 1962 &gt; 1964</b>						
Black	Tartan Red	Red	Pearl Grey	Old English White	Red	Old English White
Dove Grey*	Tartan Red	Red	Pearl Grey	Old English White	Red	Old English White
Smoke Grey	Blue-Grey	Blue	Pearl Grey	Old English White	Blue	Old English White
Almond Green	Porcelain Green	Green	Pearl Grey	Old English White	Porcelain Green	Old English White
Old English White	Tartan Red	Red	Pearl Grey	Old English White	Red	Old English White
Rose Taupe	Tartan Red	Red	Pearl Grey	Old English White	Red	Old English White
Trafalgar Blue*	Blue-Grey	Blue	Pearl Grey	Old English White	Pearl Grey	Old English White

\*NOTE: NOT available as a colour choice for Travellers. Deluxe models came with Duo-tone trim for this period with Silver Beige included as the contrasting colour.

### **1964 > 1967/1968 (gradual changeover from October 1967 to January 1968)**

Black	Cherokee Red	Red	Pearl Grey	Old English White	Red	Old English White
Dove Grey*	Cherokee Red	Red	Pearl Grey	Old English White	Red	Old English White
Smoke Grey	Blue-Grey	Blue	Pearl Grey	Old English White	Blue	Old English White
Almond Green	Porcelain Green	Green	Pearl Grey	Old English White	Porcelain Green	Old English White
Old English White	Cherokee Red	Red	Pearl Grey	Old English White	Red	Old English White
Rose Taupe	Cherokee Red	Red	Pearl Grey	Old English White	Red	Old English White
Trafalgar Blue*	Blue-Grey	Blue	Pearl Grey	Old English White	Pearl Grey	Old English White

\*NOTE: NOT available as a colour choice for Travellers. Old English White was used as a grille colour until around October 1967 where it was replaced with Snowberry White

### **Oct 1967 > Jun 1969 (Convertibles), June 1970 (Travellers), November 1970 (Saloons)**

Black	Cherokee Red	Red	Pearl Grey Maroon	Snowberry White	Red	Dark Silver
Maroon 'B'	Cherokee Red	Red	Pearl Grey	Snowberry White	Gold	Dark Silver
Smoke Grey	Blue-Grey	Blue	Pearl Grey	Snowberry White	Blue	Dark Silver
Almond Green	Porcelain Green	Green	Pearl Grey	Snowberry White	Porcelain Green	Dark Silver
Snowberry White	Black	Black	Black Maroon	Snowberry White	Red	Dark Silver

Peat Brown	Cherokee Red	Red	Pearl Grey	Snowberry White	Snowberry White	Dark Silver
Trafalgar Blue	Blue-Grey	Blue	Pearl Grey	Snowberry White	Pearl Grey	Dark Silver

**1969 > June 1970 (Travellers ONLY)**

Blue Royale	Galleon Blue	Blue	N/A	Police White	Gold	Dark Silver
Faun Brown	Autumn Leaf	Brown	N/A	Police White	Gold	Dark Silver
Cumulus Grey	Galleon Blue	Blue	N/A	Police White	White	Dark Silver
Connaught Green	Autumn Leaf	Brown	N/A	Police White	Gold	Dark Silver
Glacier White	Black	Black	N/A	Police White	Black	Dark Silver
Bermuda Blue	Black	Black	N/A	Police White	White	Dark Silver
White	Cherokee Red	Red	N/A	Police White	Gold	Dark Silver
White	Blue-Grey	Blue	N/A	Police White	Gold	Dark Silver
White	Porcelain Green	Almond Green	N/A	Police White	Gold	Dark Silver
White	Black	Black	N/A	Police White	Gold	Dark Silver

**June 1970 > April 1971 (Travellers ONLY)**

Aqua	Navy	Navy	N/A	Glacier White	Prune	Light Silver
Limeflower	Navy	Navy	N/A	Glacier White	Prune	Light Silver
Glacier White	Navy	Navy	N/A	Glacier White	Flame Red	Light Silver
	Red					
	Geranium	Red				
Bedouin	Autumn Leaf	Autumn Leaf	N/A	Glacier White	Blaze	Light Silver
Teal Blue	Limeflower	Olive	N/A	Glacier White	Limeflower	Light Silver
Bermuda Blue	Navy Blue	Navy	N/A	Glacier White	Prune	Light Silver

NOTE: On very late Travellers 'ash' coloured wing piping was used instead of body coloured wing piping

## Body Colours: Duration of use

<u>Colour</u>	<u>Introduced</u>	<u>Chassis Number</u>	<u>Series</u>	<u>Discontinued</u>	<u>Chassis Number</u>	<u>Series</u>	<u>Notes</u>
Platinum Grey	Sep 1948	501	MM	Sep 1950	63326	MM	
Romain Green	Oct 1948	510	MM	Sep 1950	63489	MM	
Black	Oct 1948	528	MM	Nov 1970	1287903	5	#2
				Jul 1969	1257121		#3
Maroon	Dec 1948	949	MM	Jun 1950	49717	MM	
Mist Green	Sep 1950	63542	MM	Jun 1952	151267	MM	
Gascoyne Grey	Sep 1950	63617	MM	Jul 1952	153743	MM	
Thames Blue	Sep 1950	63706	MM	May 1952	147638	MM	
Clarendon Grey	Jun 1952	149038	MM	Jan 1959	694645	3	
Empire Green	Jul 1952	151845	MM	Apr 1956	426894	II	#2
				Sep 1956	448714		#3
Birch Grey	Jul 1952	154129	MM	Oct 1954	289575	II	
	May 1956	430282	II	Jan 1959	694239	3	#4
	Sep 1956	449269	3				#6
Maroon	Feb 1953	177640	MM	Feb 1953	184201	II	#1
Smoke Blue	Oct 1954	290385	II	Feb 1955	316731	II	#2
		289798			313418		#3
Sandy Beige	Feb 1955	319579	II	May 1956	433334	II	#2
		313543		Sep 1956	448560		#3
Dark Green	May 1956	430352	II	Feb 1959	695275	3	#2
	Sep 1956	449129	3				#5
Sage Green	May 1956	427459	II	Mar 1959	708537	3	#2
	Feb 1959	693808	3		704301		#3
Cream	Sep 1956	449236	3	Apr 1958	608041	3	#7
Turquoise	Oct 1956	449553	3	Jan 1959	695191	3	#8
Pale Ivory	April 1958	608663	3	Feb 1959	695162	3	#7
Frilford Grey	Jan 1959	692882	3	Jul 1960	847831	3	
Pearl Grey	Jan 1959	692902	3	Jul 1960	847250	3	#7
Clipper Blue	Jan 1959	693589	3	Oct 1961	934932	3	#2
				Jul 1960	846941		#3
Smoke Grey	Feb 1959	695314	3	Nov 1970	1288358	5	#2
	Jul 1960	846951		Jul 1969	1257326		#3
Yukon Grey	Jul 1960	847397	3	Nov 1961	939211	3	
Old English White	Jul 1960	848109	3	Jan 1968	1208986	5	
Porcelain Green	Jul 1960	851256	3	Oct 1961	934714	3	#7
Dove Grey	Oct 1961	934892	3	Jan 1968	1208363	5	#7
Rose Taupe	Oct 1961	934900	3	Dec 1967	1207908	5	
Almond Green	Oct 1961	935214	3	Nov 1970	1288024	5	#2

				Jul 1969	1257418		#3
Highway Yellow	Oct 1961	936910	3	Jul 1962	979650	3	#7
Trafalgar Blue	Aug 1962	981731	3	Nov 1970	1288377	5	#2
	Nov 1967	1205081	5	Jul 1969	1257371		#3
Maroon 'B'	Oct 1967	1200480	5	Jul 1969	1257425	5	#3
Peat Brown	Oct 1967	1200534	5	Nov 1970	1288376	5	#2
				Jul 1968	1227264		#3
Snowberry White	Oct 1967	1200773	5	Nov 1970	1288281	5	#2
				Jul 1969	1257181		#3

**Key:**

#1	Only used on approximately 400 cars
#2	Saloon/Convertible
#3	Traveller
#4	Resumed for use on Saloons and Convertibles
#5	Used on Saloons, Convertibles & Travellers as well as 698997 (one-off)
#6	Used on Saloons, Convertibles & Travellers as well as 699014 (one-off)
#7	NOT used on Travellers
#8	NOT used on Travellers. Also used on 698996 (one-off)

---

